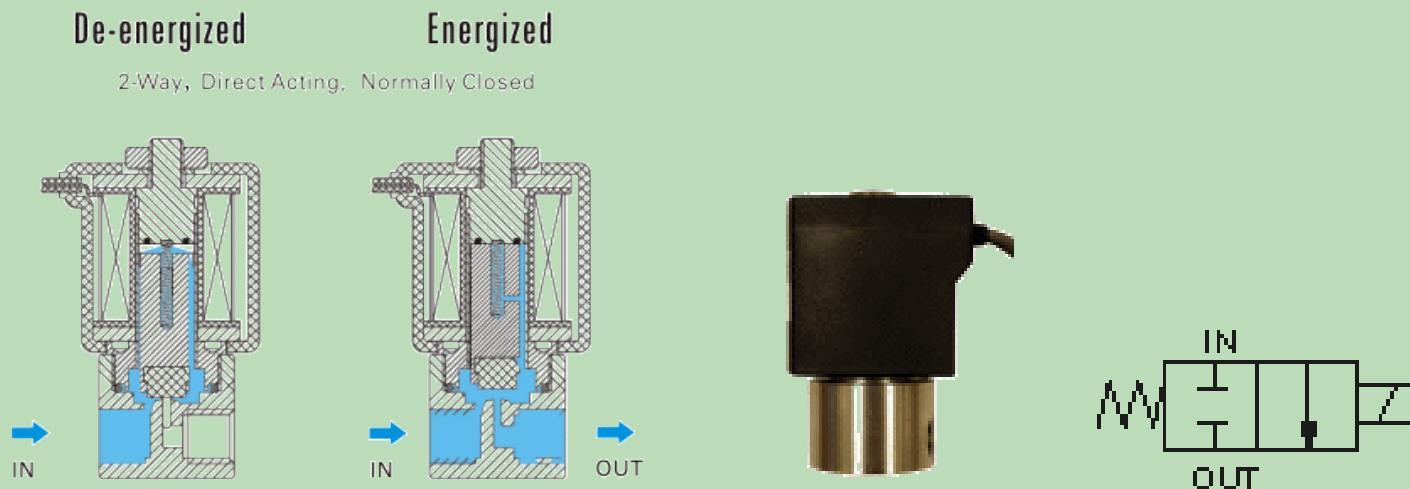


Solenoid Valve Specifications and Dimensions: 2H012 Series for High Pressure and Cryogen Applications

2H012 Series Valve Specifications	
Port & Mounting	Body Ported,
Action & Motion	Direct Acting, Normally Closed, Two Position, 2 Way, Orifice=1.2MM, Cv=0.05
Operating Pressure	28" Hg to 1000 PSI (Coil Wattage Dependent)
Working Medium	Air, Water, Liquid
Maximum Pressure	1000 PSI
Operating Temperature	(-20 to 85 Deg. C) with non-freezing medium
Coil Insulation & Protection Class	F Class, IP65 (CE Certification)
Coil Duty Cycle	100% ED
Electrical Connection	G = Grommet (12" Lead Wire)
Body Material	Stainless Steel
Seal Material	PTFE
Armature Tube	Stainless steel
Plunger & Spring	Stainless steel
Lubrication	Not Required

STC's high performance direct acting solenoid valves offer reliability, compact and rugged designs, low power consumption, high-speed response, long life cycle (over 10 million cycles), DIN connections with indicator lights, pre-wired electric connection options, manifold mounting options, and simple installation, maintenance, and control.

2H012 Series DIRECT ACTING solenoid valves and do not require a minimum operating differential pressure. As shown below when the coil is energized (right diagram), it lifts the solenoid plunger, which normally rests on the valve seat and lifts it to open the main valve orifice. When the coil is de-energized (right diagram), the spring force the plunger return to the valve seat to close the valve orifice.



Electrical Coil Connections

For DIN Coil

To connect DIN coil:

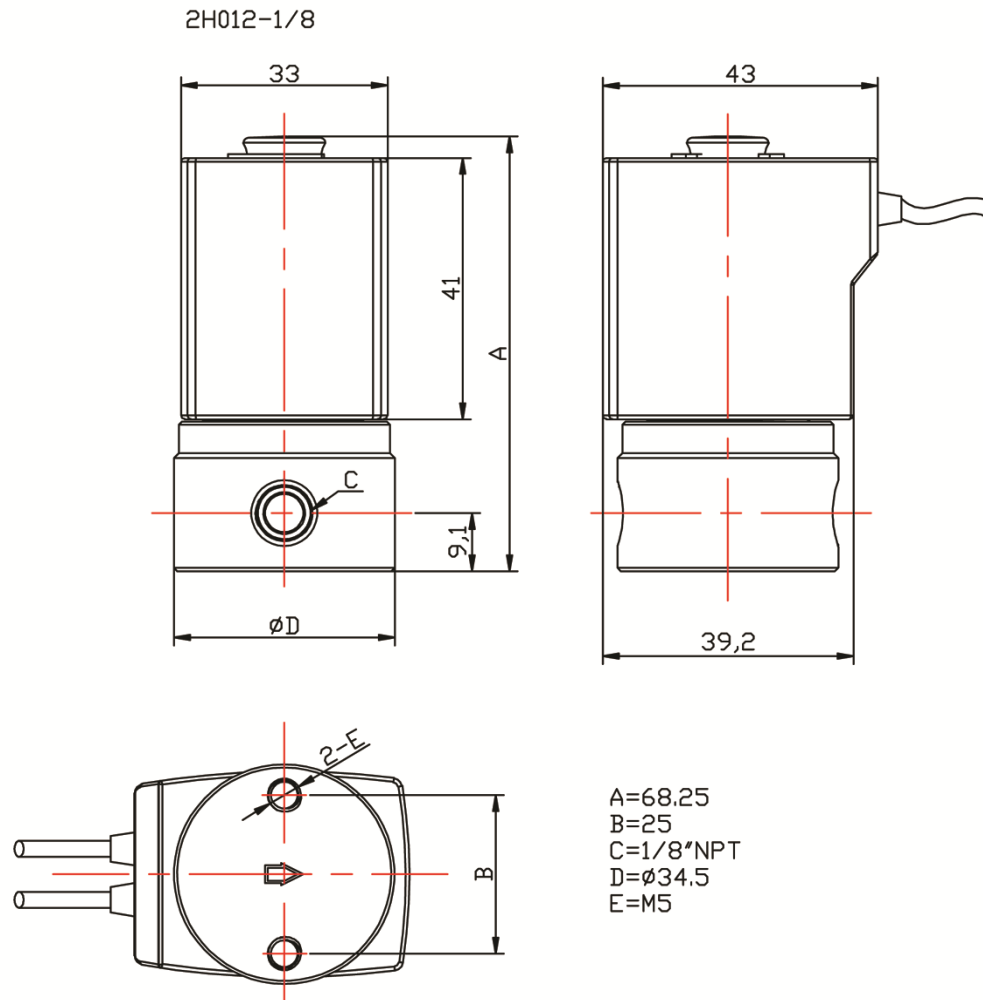
1. Remove the Philip screw from the plastic housing and unplug it from the DIN coil.
2. From the screw opening, push the terminal block out from the plastic housing.
3. Note the 1, 2 and ground markings on underside of DIN enclosure.
4. For DC DIN Coil, Connect 1 to Positive, 2 to Negative.
5. For AC DIN Coil, connect 1 to HOT wire, 2 to Neutral wire, and if required connect ground to ground wire.

For Grommet Coil

To connect Grommet coil:

1. For DC Coil, connect one of the two wires to Positive, and the other wire to Negative.
2. For AC Coil, connect one of the two wires to HOT wire, and the other wire to neutral wire.

2H012 Solenoid Valve Dimensions (UNIT=MM)



MODEL	PORT	Cv (Orifice)	A	B	C	D	E	F	Pressure	Temperature
2H012	1/8"	0.05 (1.2MM)	65.5	30	1/8"	17	15.5	M4	0-1000 PSI	0-85°C